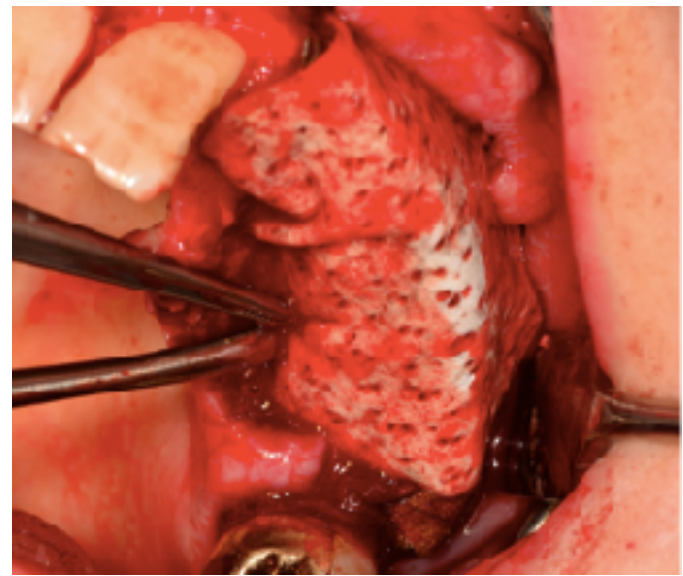
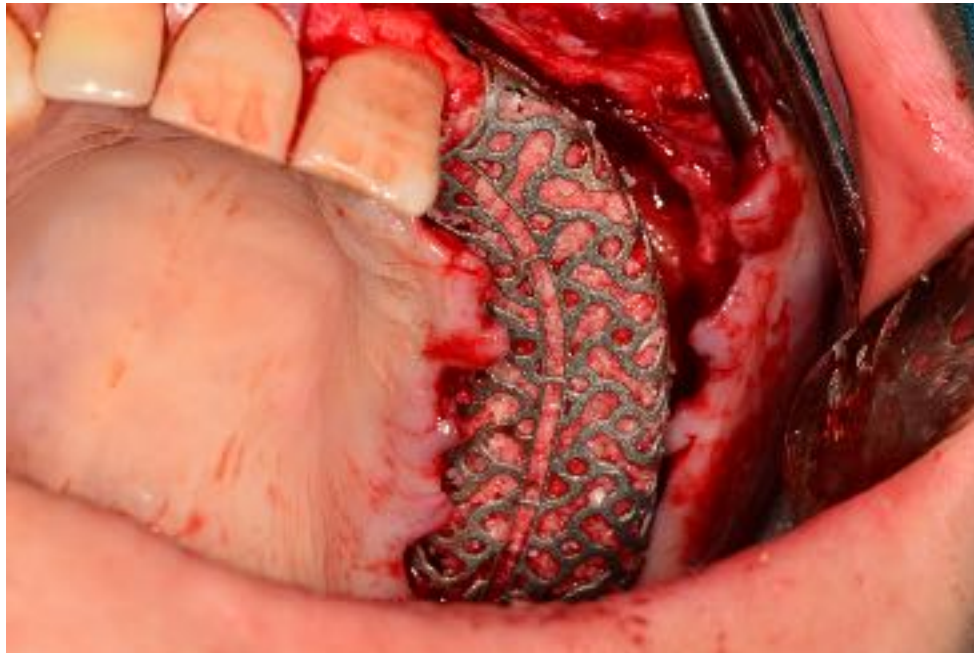


blue<sup>®</sup>m, for the protection of injured periodontal tissue

## Guided tissue regeneration Pat B.W



blue<sup>®</sup>m, for the protection of injured periodontal tissue



During surgery

blue<sup>®</sup>m, for the protection of injured periodontal tissue



Applying blue<sup>®</sup>m oral gel during surgery

blue<sup>®</sup>m, for the protection of injured periodontal tissue



1 day postoperative

blue<sup>®</sup>m, for the protection of injured periodontal tissue



5 days postoperative

blue<sup>®</sup>m, for the protection of injured periodontal tissue



Wound directly after surgery



Wound after 5 days blue<sup>®</sup>m  
oral gel