

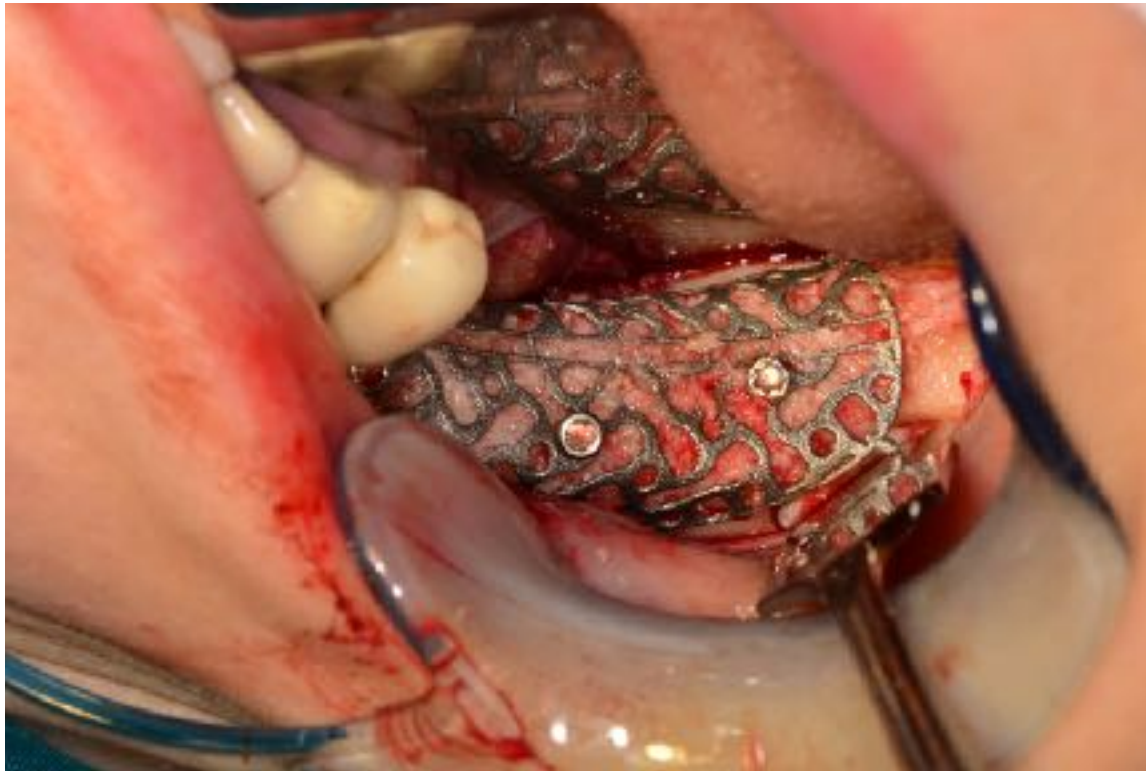
blue[®]m, for the protection of injured periodontal tissue

Guided tissue regeneration Pat R.A.



During surgery

blue[®]m, for the protection of injured periodontal tissue



During surgery

blue[®]m, for the protection of injured periodontal tissue



Applying blue[®]m oral gel during operation

blue[®]m, for the protection of injured periodontal tissue



2 days post-operative