

blue[®]m, for the protection of injured periodontal tissue

Mini-implant placement 2017-04-03



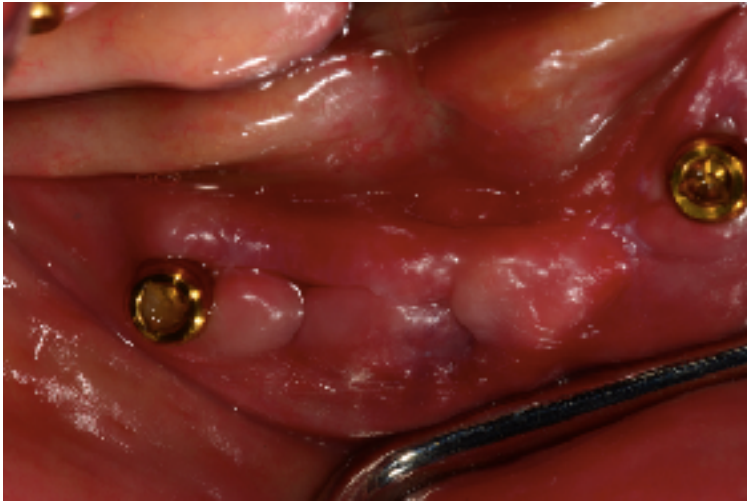
blue[®]m, for the protection of injured periodontal tissue



Applying blue[®]m oral gel during operation

blue[®]m, for the protection of injured periodontal tissue

Mini-implant placement Post-operative



4 days post-operative control



1 month post-operative